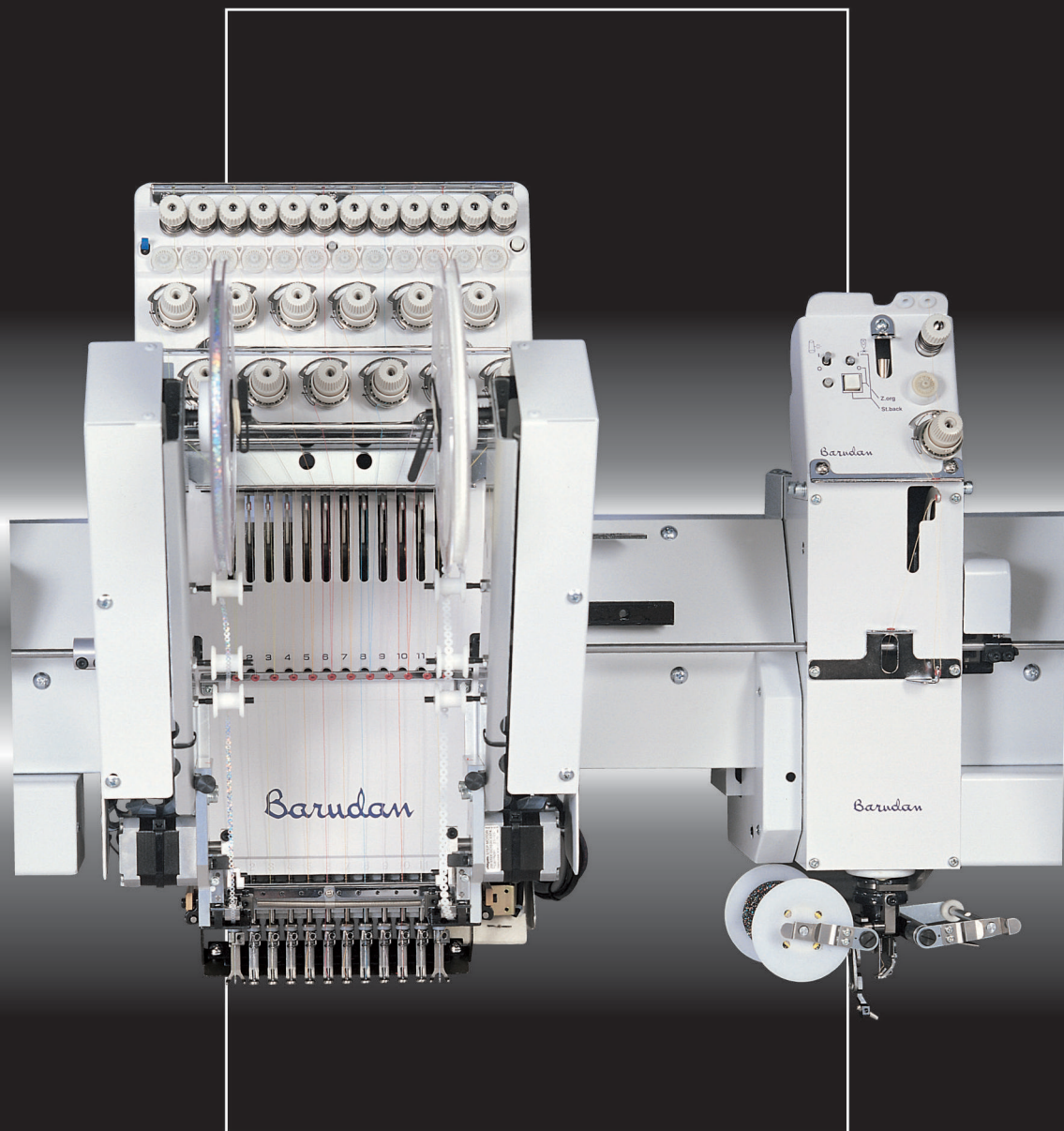


New generation Lock Stitch Zig-Zag combination machine with Barudan's long history and latest technology



MODEL
BEKS-HLZ1210



- Touch screen (10.4 inch, Resolution 800×600)
- Ability to register shortcuts info multiple groups
- Customizable Display
- Easy Icon based operation
- LAN Connector Standard, 1×COM Port & 2×USB Ports, 1×Remote Controller Connector
- 70 million stitch capacity, 100 memory locations

Lock Stitch Zig-Zag Combination series

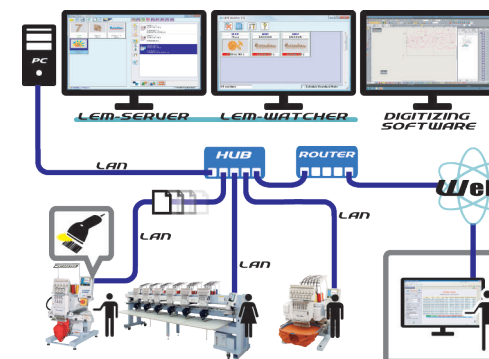
Barudan
THE MOST ADVANCED EMBROIDERY MACHINE SINCE 1959

LAN compatible automat for easy networking.

LEM Server System (option)

Quick and Easy Design Transfer to Machines using a Barcode Scanner.

- Able to connect to 100 Barudan machines.
- Production Efficiency Reporting is available on the LEM Pro version and is even accessible from anywhere via the web.
- "Report" what head on which machines need maintenance.
- "See" what your machines are producing even from home.
- "Know" which employees and machines are more productive.



BARUDAN CO., LTD.



ISO9001

■ Sales Headquarter
20 Tsukagoshi, Josuiji, Ichinomiya-city, Aichi-pref.,
491-0004 Japan
Phone +81 586-76-1137
Fax +81-586-77-1499
URL <http://www.barudan.co.jp/>
E-mail info@barudan.co.jp

Agent:

The worlds fastest Lock Stitch Zig-Zag embroidery Machine with speed 900rpm.

Various materials, such as taping, cording, Zig-Zag sewing, are possible with this Lock Stitch Zig-Zag embroidery machine.

Fashion trends are produced quickly with this new technology.

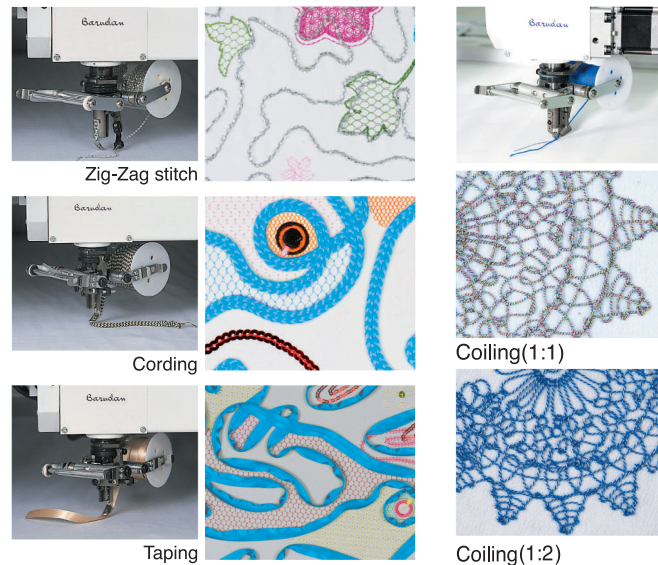
Produce a wide range of embroidery including standard embroidery.



MODEL
BEKS-HLZ1210

Lock Stitch Zig-Zag embroidery

- Speed
(Standard Embroidery)
200~1,000rpm.
(Lock Stitch Zig-Zag Embroidery)
200~900rpm.
- Lock Stitch Zig-Zag Embroidery
Zig-Zag stitch
Cording
Taping
Coiling
- Option
Sequin Device
Double Sequin Device
Twin Sequin Device
Double Twin Sequin Device



Machine Specifications / Main Dimensions

MODEL	Embroidery Area (mm)	Needle Distance (mm)	Number of colors for embroidery	Speed (rpm)		Power Supply (v)	Power Consumption (kw)	Dimensions (mm)		
				Standard Embroidery	Lock Stitch Embroidery			L	W	H
BEKS-HLZ912	750 × 560 / 560	560	9	200~1000	200~900	3φ200~415	2.5	8820	2130	1670
	1000 × 560 / 560							2630		
BEKS-HLZ915	750 × 560 / 560	640	12	200~1000	200~900	3φ200~415	2.8	10800	2130	1770
	1000 × 560 / 560							2630		
BEKS-HLZ1206	750 × 640 / 640	640	12	200~1000	200~900	3φ200~415	2.5	6130	2130	1670
BEKS-HLZ1208	1000 × 640 / 640							2630		
BEKS-HLZ1210	750 × 640 / 640	640	12	200~1000	200~900	3φ200~415	2.5	7410	2130	1670
BEKS-HLZ1212	1000 × 640 / 640							2630		
	750 × 640 / 640							8690	2130	
	1000 × 640 / 640							10270	2130	1920
									2630	

Note 1 : The embroidery area indicated above allows for maximum pantograph movement. The frame used may restrict the actual embroidery field size.
 Note 2 : Machines and Specifications are subject to change at any time without prior notice.

